

HUGEROCK T60 Version:2021

RUGGED PDA

5.5 inch industrial multi-function mobile handheld

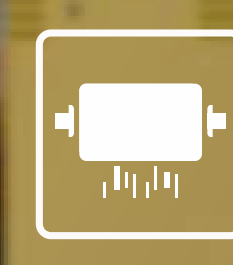
T60 Hugerock industrial multi-function mobile handheld, tough appearance, is with 5.5" industrial-grade, 500 nits FHD display, toughened glass TP, and also aero-grade titanium alloy material frame. It meets MIL-STD-810G/Method516.6/ProcedureIV and military standard. And it can withstand up to a 1.5m drop and 2 ton shock pressure test. While, it also comes with a suite of integrated features, which is high-integration, high-performance, high-reliability, high-flexibility. Also it goes with a long-life 7800mAh battery, sunlight-readable, and operating under extreme low temperature.



All-mode Full Bands



7800mAh Safety Battery



1.5m Drop-proof



5M/13M Camera



GNSS GPS+Beidou+Glonass +AGPS+SBAS



Shenzhen SOTEN Technology Co., LTD
ADD: 10F, B#2, Pivon Research Building, No. 5158 Shahe West Road, Nanshan, Shenzhen, China 518055
Phone: +86(0755)-61885156 61827963 Fax: +86(0755)-61827963
Web: www.soten.com.cn FAE: fae@soten.com.cn Skype: sales.soten

APPEARANCE



Order No : 6021Y

Order No : 6021G

Order No : 6021R



1. Power button
2. SOS button
3. Type-C (Sealed Cover)
4. Earphone (Sealed Cover)
5. RS232 (Optional)
6. Barcode module(Optional)
7. SIM (Optional)
8. Hanging hole
9. Front camera
10. Charge lamp
11. Receiver
12. Light sensor
13. Delete button
14. Custom button
15. Home button
16. Confirm button
17. Menu button
18. Fingerprint module (Optional)
19. Back button
20. Arrow button
21. Search button
22. MIC
23. 2pin pogo pin
24. Volume up
25. Volume down
26. Scan button(Definition)
27. SIM (Sealed Cover)
28. Nameplate
29. Main camera
30. Flash light
31. Speaker
32. Fihand strap xing parts



Shenzhen SOTEN Technology Co., LTD
ADD: 10F, B#2, Pivon Research Building, No. 5158 Shahe West Road, Nanshan, Shenzhen, China 518055
Phone: +86(0755)-61885156 61827963 Fax: +86(0755)-61827963
Web: www.soten.com.cn FAE: fae@soten.com.cn Skype: sales.soten

SPECIFICATION

Model : T60(2021)

Hardware	Communications & Networking
CPU: ARM Cortex A73 octa-core (2.0GHz)	Phone Call: GSM /WCDMA/CDMA 1X/VoLTE
GPU: ARM Mali-G72 MP3	2G: GSM/CDMA 1X/EDGE/GPRS/WAP
RAM: 8G	2G Band: GSM (B2/3/5/8)
Internal Memory: 128G	3G: WCDMA 3.75G (HSDPA +42.2Mbps, HSUPA +11.5Mbps), EVDO
External Memory: Micro SD card(T-FLASH card), max 256GB	3G Band: WCDMA(B1/2/5/8), Evdo: BCO/BC1 CDMA: BCO/BC1
Main Camera: 13.0MP(AF)with flash led	4G: FDD: 150Mbps down, 50Mbps UP TDD: 150Mbps downlink, 50Mbps uplink
Sub Camera: 5.0MP	4G Band: TD-LTE (B38/39/40/41); FDD LTE (B1/2/3/4/5/7/8/12/17/20/28)
Battery: 7800mAh	WI-FI: Dual-band WIFI(2.4GHz/5GHz) single stream 802.11 a/b/g/n/ac
Display: 5.5 inch IPS/AFFS 1080*1920 FHD industrial 500cd/m2 Sunlight Readable	BT: 4.2 Low Energy(LE)
Touch Panel: Capacitive/AFSTES touch panel supports glove touch/spray/active capacitive pen	Industrial & Reliability Design
IO/Sensor/Navigation	Shake-proof: 1-19Hz/1.0mm; 19-200Hz/1.0g
SIM Card: Nano sim card*2	Drop-proof /IK: MIL-STD-810G/Method516.6/Procedure IV & Touch Panel IK05
TF Card: Micro SD card (T-FLASH card); max 256GB	Waterproof: Class 7 (IEC 60529)
Headphone: 3.5mm(CTIA)	Dustproof: Class 6 (IEC 60529)
Charging interface: Type-C*2pin pogo pin	Reliability: MTBF>5000h; MTTR<0.5h
Data interface: USB Type-C(OTG)*1	Operating temperature: -20°C to 55°C
RS232 (optional): RS232X1	Storage Temperature: -40°C to 70°C
Gravity sensor: support	RH: 5% to 95%
Motion sensor: support	Operating Altitude: Max: 4,500m (15,000 feet)
Direction Sensor: support	Certification/OS/Software
Magnetic Field Sensor: support	Certification: 3C/FCC/CE/ROHS/IP67 (IEC 60529)
Gyro sensor: support	Language: English, Spanish, Portuguese(Brazil), Portuguese(Portugal), Italian, German, Dutch, French, Polish, Romanian, Turkish, Russian, Arabic, Indonesian, Malay, Thai, Vietnamese, Hindi, Hebrew, Simplified, Chinese, Chinese Traditional, etc
Rotation Vector: support	OS: Android 10.0 / 11.0
Light-sensor: support	Package/Warranty terms/OEM
Acceleration sensor: support	Warranty: 24 months
Charger: 5.0V 2A-10W	OEM/ODM: Support
Navigation: GPS+Beidou+Glonass+AGPS+SBAS (EPO 2.5m)	Package: USB cable/Charger 5V 2A/Introduction manual/Screen protector/Packing box(Can be customized logo) /Aircraft box/Toolkit(optional)/OTG x 1/SIM Card Ejector x 1
Appearance	
Size: 195*98*22mm (LxWxH)	
Weight: 460g	
Color & Material: Black&yellow; Black&green; Black&Gray	



Shenzhen SOTEN Technology Co., LTD
ADD: 10F, B#2, Pivon Research Building, No. 5158 Shahe West Road, Nanshan, Shenzhen, China 518055
Phone: +86(0755)-61885156 61827963 Fax: +86(0755)-61827963
Web: www.soten.com.cn FAE: fae@soten.com.cn Skype: sales.soten

OPTIONAL MODULES & ACCESSORIES



Barcode reader
Optional 2D module



2D Barcode Module N1
N12D PDF417, QR Code, Micro QR, Data Matrix ID Code 128, EAN-13, EAN-8, Code 39, UPC-A, UPC-E, Codabar, Interleaved 2 of 5, ITF-6, ITF-14, ISBN, ISSN, Code 93, UCC/EAN-128, GS1 Databar, Matrix 2 of 5, Code 11, Industrial 2 of 5, AIM128, Plessey, MSI-Plessey 640/480 CMOS
Code39(5mil)40-150mm, Data Matrix(10mil)45-120mm, QR Code(15mil)30-170mm

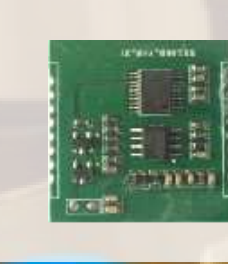


Shenzhen SOTEN Technology Co., LTD
ADD: 10F, B#2, Pivon Research Building, No. 5158 Shahe West Road, Nanshan, Shenzhen, China 518055
Phone: +86(0755)-61885156 61827963 Fax: +86(0755)-61827963
Web: www.soten.com.cn FAE: fae@soten.com.cn Skype: sales.soten

OPTIONAL MODULES & ACCESSORIES



RFID Reader
Optional LF HF UHF



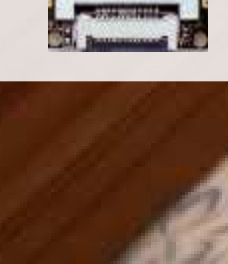
125K LF RFID Module
support: ID card(8H-10D)EM4100, 4001, TK4100, EM4305
Read distance: 2-5cm (optional HID card support)



13.56M HF RFID or NFC Module
13.56M HF support ISO14443A/B/ISO15693 readable/data transmission/Card Emulation/encryption authenticated
Read distance: 2-5cm

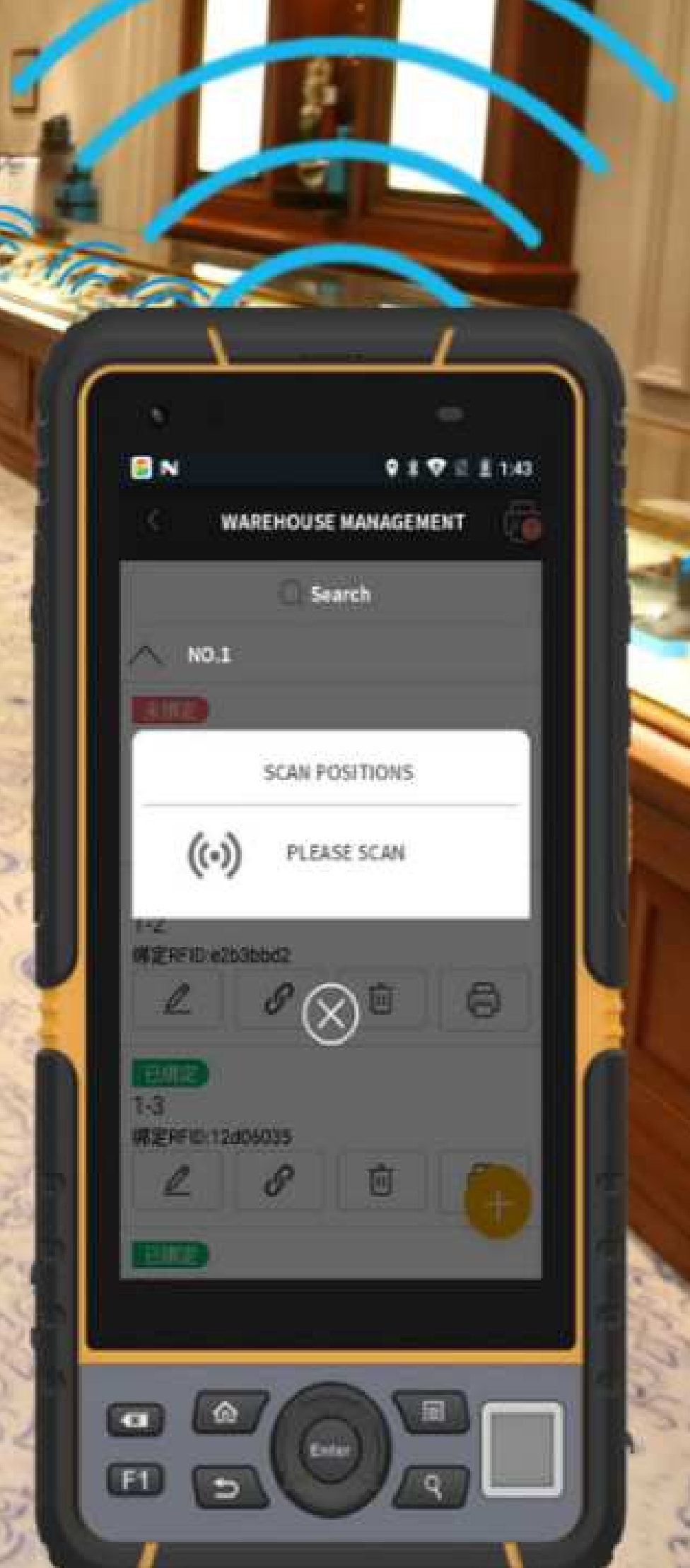


134K LF RFID Module
Operation Frequency: 134.2kHz/support agreement: ISO11784/5/Read distance >5cm
Working mode: FDX-B (full-duplex communication)



UHF RFID Module/antenna
Air interface protocol: EPCglobal UHF Class 1 Gen 2 / ISO 18000-6C/Operating spectrum range: 902MHz - 928MHz/865MHz - 868MHz(Optional)
Output range: 0-26 dBm
Output accuracy: +/- 1dB
Output power level: +/- 0.2dB
Read distance: 1.5-2m (2db antenna test card E41)

*Only one RFID module can be selected



Shenzhen SOTEN Technology Co., LTD
ADD: 10F, B#2, Pivon Research Building, No. 5158 Shahe West Road, Nanshan, Shenzhen, China 518055
Phone: +86(0755)-61885156 61827963 Fax: +86(0755)-61827963
Web: www.soten.com.cn FAE: fae@soten.com.cn Skype: sales.soten

OPTIONAL MODULES

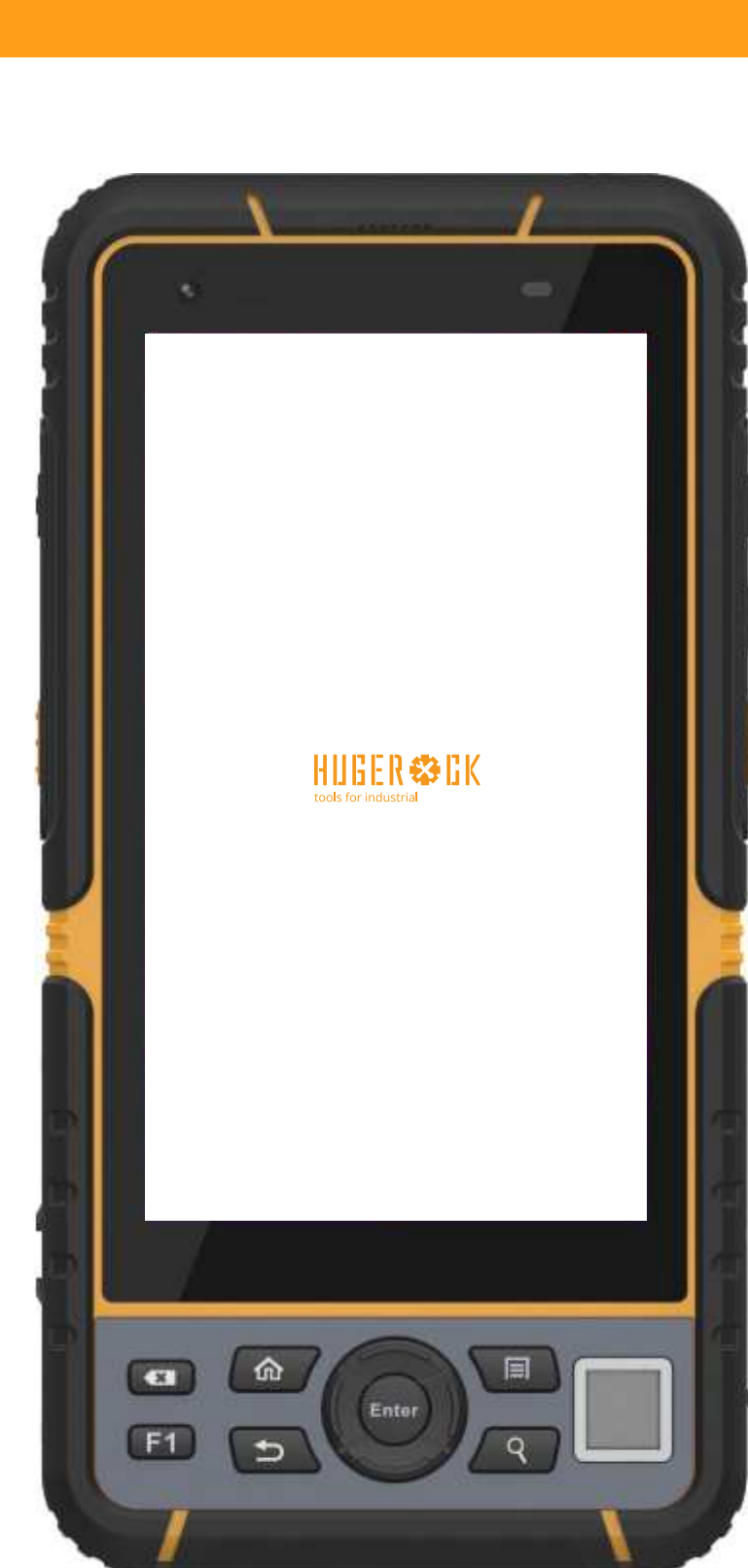


Extension 1	UHF RFID module	(M500 ASTM) + Antenna (M500 EN) + Antenna
	LF RFID module	125K LF ID card (8H-10D) 125K LF ID card (10D) 125K LF HID card module 134K LF animal tag module
	HF RFID module	13.56M HF module (single protocol) 13.56M HF module (multi-protocol)
	NFC module	
	RS232 module	
Other customer supply modules	Need to meet the interface conditions : Powered by 3.3V-1.5A/5V-1.5A, UART Interface, interface level 3.3V/5V, GPIO 1 /electrical level 3.3V/5V.	
Extension 2	1D/2D barcode module	



Shenzhen SOTEN Technology Co., LTD
ADD: 10F, B#2, Pivon Research Building, No. 5158 Shahe West Road, Nanshan, Shenzhen, China 518055
Phone: +86(0755)-61885156 61827963 Fax: +86(0755)-61827963
Web: www.soten.com.cn FAE: fae@soten.com.cn Skype: sales.soten

Customized



Boot screen: lengthways
Boot screen background color: white, light color
Boot screen resolution: 1080*1920



Nameplate customization:
Program 1: C: High-gloss metallic silver
M: stainless iron (aluminum alloy is now used)
F: Laser carving craft
Nameplate size: 29.8x21.8mm
Example:



Shenzhen SOTEN Technology Co., LTD
ADD: 10F, B#2, Pivon Research Building, No. 5158 Shahe West Road, Nanshan, Shenzhen, China 518055
Phone: +86(0755)-61885156 61827963 Fax: +86(0755)-61827963
Web: www.soten.com.cn FAE: fae@soten.com.cn Skype: sales.soten