

# HUGEROCK T101 Version:2021

## RUGGED TABLET PC

10.1Inch rugged Multi-function Mobile Computer

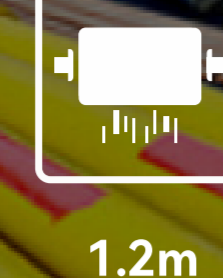
Hugerock T101(2021) mobile IOS terminal, tough appearance, is with 10.1" industrial-grade, 1000 cd/m2 full-view display, toughened glass TP, and also aero-grade titanium alloy material frame. It meets MIL-STD-810G/Method516.6/ProcedureIV and military standard. And it can withstand up to a 1.2m drop and 2 ton shock pressure test. While, it also comes with a suite of integrated features, which is high-integration, high-performance, high-reliability, high-flexibility. Also it goes with a long-life 14600mAh battery, sunlight-readable, and operating under extreme low temperature.



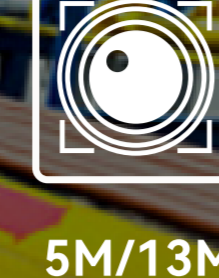
All-mode Full Bands



14600mAh Safety Battery



1.2m Drop-proof



5M/13M Camera



GNSS GPS+Beidou+Glonass +AGPS+SBAS



Shenzhen SOTEN Technology Co., LTD  
ADD: 10F, B#2, Plovon Research Building, No. 5158 Shahe West Road, Nanshan, Shenzhen, China 518055  
Phone: +86(0755)-61885156 61827963 Fax: +86(0755)-61827963  
Web: www.soten.com.cn FAE: fae@soten.com.cn Skype: sales.soten

## APPEARANCE



Order No : 101T21R



- 1. Type-A (Sealed Cover)
- 2. RS232 (Sealed Cover)
- 3. Speaker
- 4. Sub camera
- 5. Ambient light sensor
- 6. Charge lamp
- 7. Fingerprint (optional)
- 8. Menu button
- 9. Back button
- 10. Home button
- 11. Search button
- 12. Scan button
- 13. Defined button
- 14. Direction button
- 15. Confirm button
- 16. MIC
- 17. 8pin Pogo pin
- 18. Power button
- 19. TF/SIM (Sealed Cover)
- 20. Type C (Sealed Cover)
- 21. Main camera
- 22. Temperature pressure sensor (Optional)
- 23. Nameplate



Shenzhen SOTEN Technology Co., LTD  
ADD: 10F, B#2, Plovon Research Building, No. 5158 Shahe West Road, Nanshan, Shenzhen, China 518055  
Phone: +86(0755)-61885156 61827963 Fax: +86(0755)-61827963  
Web: www.soten.com.cn FAE: fae@soten.com.cn Skype: sales.soten

## SPECIFICATION

Model : T101(2021)

Hardware		Communications & Networking	
CPU	ARM Cortex-A73 octa-core (2.0GHz)	Phone Call	GSM/WCDMA/CDMA 1X/VoLTE
GPU	ARM Mali-G72 MP3	2G	GSM/CDMA 1X/EDGE/GPRS/WAP
RAM	8G	2G Band	GSM (B2/3/5/8)
Internal Memory	128G	3G	WCDMA 3.75G (HSDPA+42.2Mbps, HSUPA+11.5Mbps), EVDO
External Memory	Micro SD card (T-FLASH card), max 256GB	3G Band	WCDMA (B12/5/8), Evdo: BC0/BC1 CDMA: BC0/BC1
Main Camera	13.0MP(AF)with flash led	4G	FDD: 150Mbps down, 50Mbps UP TDD: 150Mbps downlink, 50Mbps uplink
Sub Camera	5.0MP	4G Band	TD-LTE(B38/39/40/41); FDD LTE(B1/2/3/4/5/7/8/12/17/20/28)
Battery	14600mAh	Wi-Fi	Dual-band WiFi(2.4GHz/5GHz)single stream 802.11 a/b/g/n/ac
Display	10.1 inch IPS/AFFS 1920*1200 FHD industrial 1000nit Sunlight Readable	BT	4.2 Low Energy(LE)
Touch Panel	Capacitive/frosted tempered film supports glove touch/spray/active capacitive pen	<b>Industrial &amp; Reliability Design</b>	
<b>IO/Sensor/Navigation</b>		Shake-proof	1-19Hz/1.0mm; 19-200Hz/1.0g
SIM Card	Nano sim card*2	Dropproof /IK	MIL-STD-810G/Method516.6/Procedure IV & Touch Panel IK05
TF Card	Micro SD card (T-FLASH card), max 256GB	Waterproof	Class 5 (IEC 60529)
Charging Interface	Type-C & 8pin pogo pin	Dustproof	Class 6 (IEC 60529)
Data Interface	USB Type-A(Host)*2, Type-C(OTG)*1	Reliability	MTBF>5000h; MTRR<0.5h
RS232 (optional)	RS232 serial port, using 5pin micro one GPIO port	Operating Temperature	-20°C to 55°C
Gravity sensor	support	Storage Temperature	-40°C to 80°C
Motion sensor	support	RH	5% to 95%
Direction Sensor	support	Operating Altitude	Max: 4,500m(15,000 feet)
Magnetic Field Sensor	support	<b>Certification/OS/Software</b>	
Gyro sensor	support	Certification	3C/FCC/CE/ROHS/IP65 (IEC 60529)
Rotation Vector	support	Language	English, Spanish, Portuguese(Brazil), Portuguese(Portugal), Italian, German, Dutch, French, Polish, Romanian, Turkish, Russian, Arabic, Indonesian, Malay, Thai, Vietnamese, Hindi, Hebrew, Simplified, Chinese, Chinese Traditional, etc.
Light-sensor	support	OS	Android 10.0 / 11.0
Acceleration sensor	support	Package/Warranty terms	24 months
Charger	5.0V 2A-10W	Warranty	24 months
Navigation	GPS+Beidou+Glonass+AGPS+SBAS (EPO 2.5m)	OEM/DDM	Support
<b>Appearance</b>		Package	USB cable/Charger 5V 2A/Introduction manual/Screen protector/Packing box(Can be customized logo) /Aircraft box/Toolkit (optional)/SIM Card Ejector x 1
Size	320*228*12mm (L*W*H)		
Weight	1360g		
Color & Material	Gray (Titanium alloy+ABS+PC+TPU)		



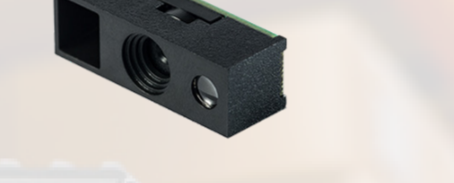
Shenzhen SOTEN Technology Co., LTD  
ADD: 10F, B#2, Plovon Research Building, No. 5158 Shahe West Road, Nanshan, Shenzhen, China 518055  
Phone: +86(0755)-61885156 61827963 Fax: +86(0755)-61827963  
Web: www.soten.com.cn FAE: fae@soten.com.cn Skype: sales.soten

## OPTIONAL MODULES & ACCESSORIES



### Barcode Reader

Optional 1D/2D



**2D Barcode Module N1**  
N12D PDF417, QR Code, Micro QR, Data Matrix 1D Code 128, EAN-13, EAN-8, Code 39, UPC-A, UPC-E, Codabar, Interleaved 2 of 5, ITF-6, ITF-14, ISBN, ISSN, Code 93, UCC/EAN-128, GS1 Databar, Matrix 2 of 5, Code 11, Industrial 25, Standard 2 of 5, AIM128, Plessey, MSI-Plessey 640\*480 CMOS EAN13(13mil)65-350mm, PDF417(6.7mil)50-125mm, Code39(5mil)40-150mm, Data Matrix(10mil)45-120mm, QR Code(15mil)30-170mm



**2D Barcode Module Honeywell N3680**  
2D: PDF417, MicroPDF417, Data Matrix, Maxicode, QR Code, MicroQR, Aztec, Hanxin, etc.  
1D: UPC, EAN, Code 128, Code 39, Code 93, Code 11, Matrix 2 of 5, Codabar Interleaved 2 of 5, Mis Plessey, GS1 Databar, China Postal, Korean Postal, etc. 640 pixels(H) x 480 pixels(V)High Resolution;6.88 mil(PDF417);0mm-50mm

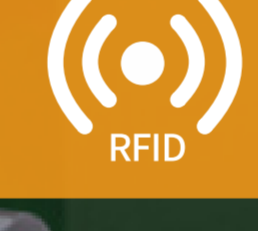


**2D Barcode Module U3020**  
2D: QR Code, Data Matrix, PDF417, Aztec 1D: EAN, UPC, Code 39, Code 93, Code 128, UCC/EAN 128, Codabar, Interleaved 2 of 5, ITF-6, ITF-14, ISBN, ISSN, MSI-PlesCy GS1 Databar, Code 11, Industrial 25, Standard 25, PlesCy, Matrix 2 of 5  
EAN-13: 30mm-130mm (13 mil)  
Code39: 30mm-50mm (5 mil 10 bit)  
QR Code: 25mm-120mm (20 mil 16 bit)  
Data Matrix: 30mm-70mm (10 mil 20 bit)  
PDF 417: 30mm-80mm (6.67 mil 7 bit)



Shenzhen SOTEN Technology Co., LTD  
ADD: 10F, B#2, Plovon Research Building, No. 5158 Shahe West Road, Nanshan, Shenzhen, China 518055  
Phone: +86(0755)-61885156 61827963 Fax: +86(0755)-61827963  
Web: www.soten.com.cn FAE: fae@soten.com.cn Skype: sales.soten

## OPTIONAL MODULES & ACCESSORIES

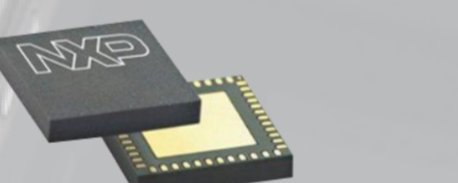


### RFID Reader

Optional LF HF UHF



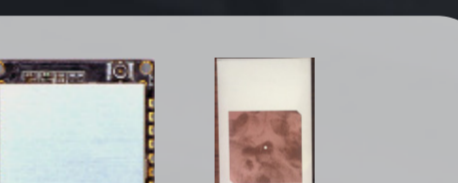
**125K LF RFID Module**  
support: ID card(8H-10D)EM4100, 4001, TK4100, EM4305  
Read distance: 2-5cm  
(optional HID card support)



**13.56M HF RFID or NFC Module**  
ISO14443A/B/ISO15693 readable/data transmission/Card Emulation/encryption authenticated  
Read distance: 2-5cm



**134K LF RFID Module**  
Operation Frequency: 134.2KHz/support agreement: ISO11784/5/Read distance >5cm  
Working mode: FDX-B(full-duplex communication)



**UHF RFID Module/Antenna**  
Air interface protocol: EPCglobal UHF Class 1 Gen 2 / ISO 18000-6/Operating spectrum range: 902MHz - 928MHz/865MHz - 868MHz(Optional)  
Output range: 0-24 dBm  
Output accuracy: +/- 1dB  
Output power level: +/- 0.2dB  
Read distance: 1.5-2m(2db antenna test card E41)



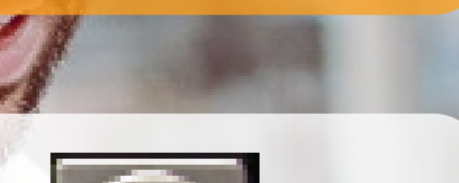
Shenzhen SOTEN Technology Co., LTD  
ADD: 10F, B#2, Plovon Research Building, No. 5158 Shahe West Road, Nanshan, Shenzhen, China 518055  
Phone: +86(0755)-61885156 61827963 Fax: +86(0755)-61827963  
Web: www.soten.com.cn FAE: fae@soten.com.cn Skype: sales.soten

## OPTIONAL MODULES & ACCESSORIES



### Fingerprint

Optional G2010

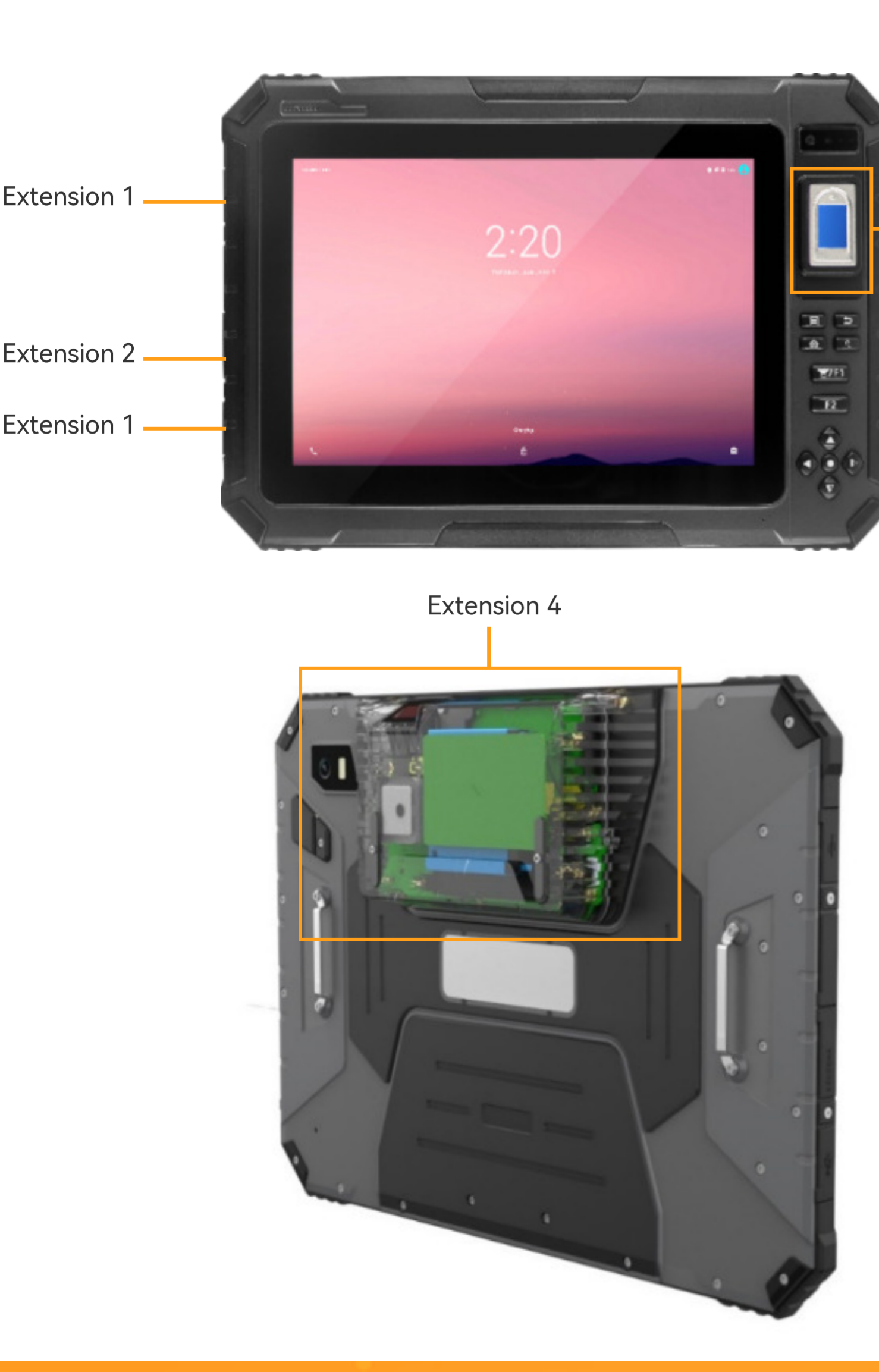


**G2010 Module**  
G2010 Capacitive fingerprint sensor, FAP10, 500 dpi, 8 bit, 256X360 size, FBI MINEX III (NIST Certification)



Shenzhen SOTEN Technology Co., LTD  
ADD: 10F, B#2, Plovon Research Building, No. 5158 Shahe West Road, Nanshan, Shenzhen, China 518055  
Phone: +86(0755)-61885156 61827963 Fax: +86(0755)-61827963  
Web: www.soten.com.cn FAE: fae@soten.com.cn Skype: sales.soten

## OPTIONAL MODULES



Extension 1	USB Type-A(Host)*2	
Extension 2	RS232 I/O	
Extension 3	Fingerprint Module	
Extension 4	LF RFID module	125K LF ID card (8H-10D) 125K LF ID card (10D) 125K LF HID card module 125K LF animal tag module HID card reader module
	HF RFID module	13.56M HF module (single protocol) 13.56M HF module (multi-protocol) UHF AIM500 American Standard
	UHF RFID module	UHF air antenna, (long distance 8-10 meters) UHF ultra high frequency (M500 European standard) UHF module (2000) UHF module (M550 integrated with module antenna)
	NFC	NFC Module NFC antenna Newland N1 scanner
	1D/2D Barcode Module	U3020 scanner N3680 scanner
	ID card module	ID card module Antenna board
	Temperature pressure sensor	
	Laser light	
	38K Infrared module	
	Industrial-grade short-distance data communication module	Lora ZigBee
Other customer supply module	Needed to meet the interface conditions : Powered by 3.3V1.5A/5V-1.5A, UART interface, interface level 3.3V/5V, GPIO (optional) level 3.3V/5V.	



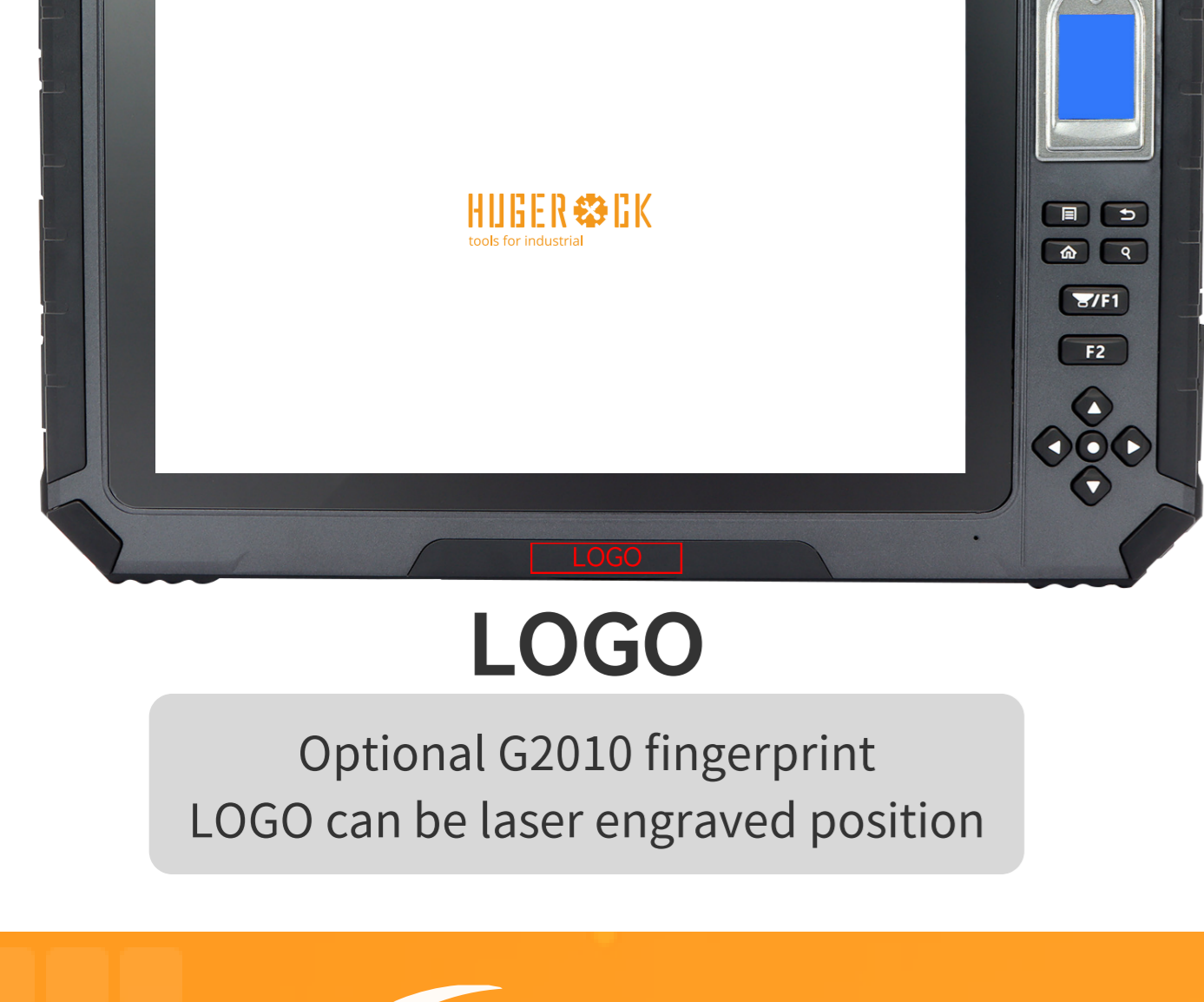
Shenzhen SOTEN Technology Co., LTD  
ADD: 10F, B#2, Plovon Research Building, No. 5158 Shahe West Road, Nanshan, Shenzhen, China 518055  
Phone: +86(0755)-61885156 61827963 Fax: +86(0755)-61827963  
Web: www.soten.com.cn FAE: fae@soten.com.cn Skype: sales.soten

## Customized



### LOGO

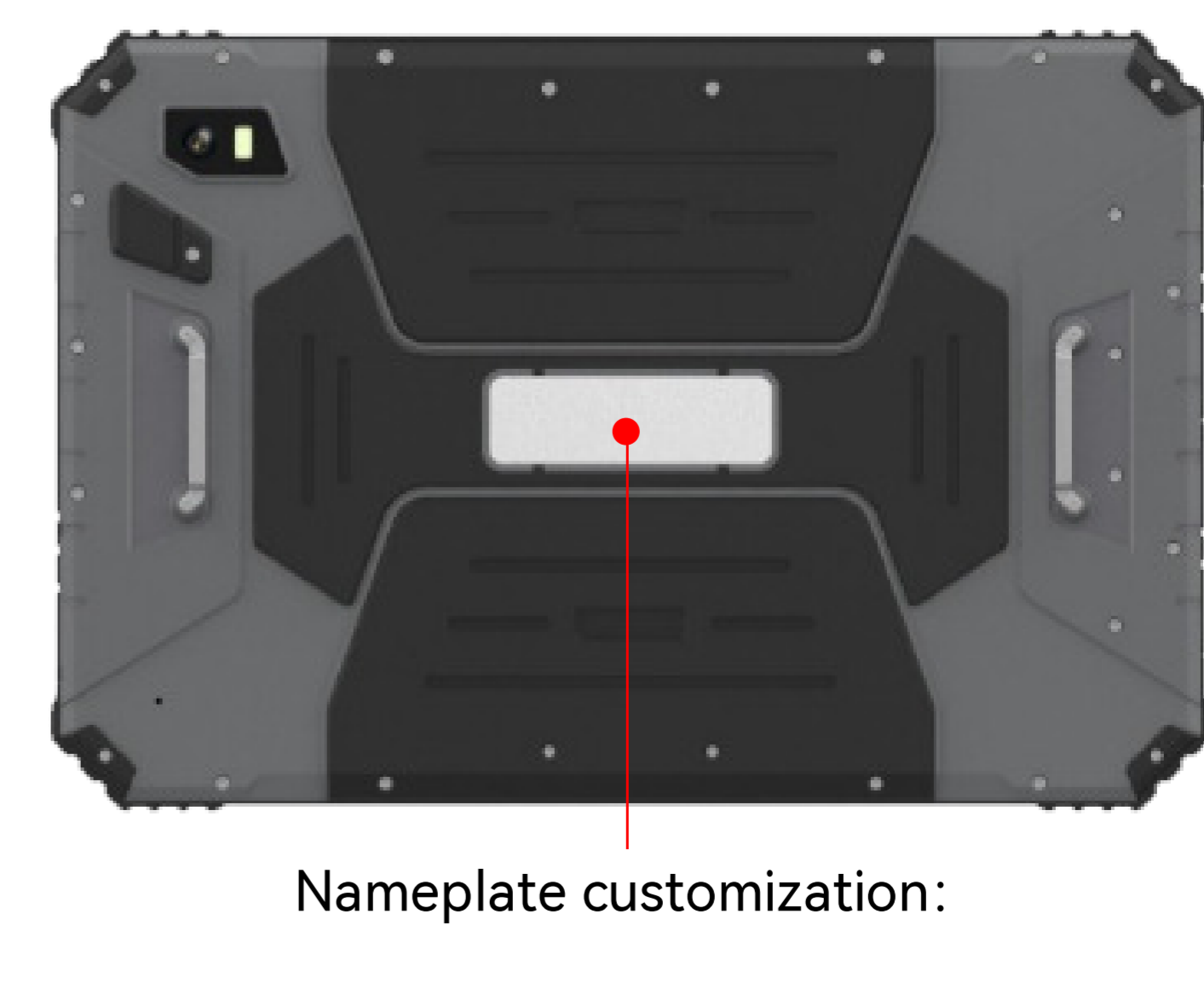
Can be silk screen position  
+NFC's LOGO is at the bottom  
LOGO without NFC can be centered



### LOGO

Optional LOGO fingerprint  
LOGO can be laser engraved position

Boot screen: widthwise  
Boot screen background color:  
white, light color  
Boot screen resolution:  
1920\*1200

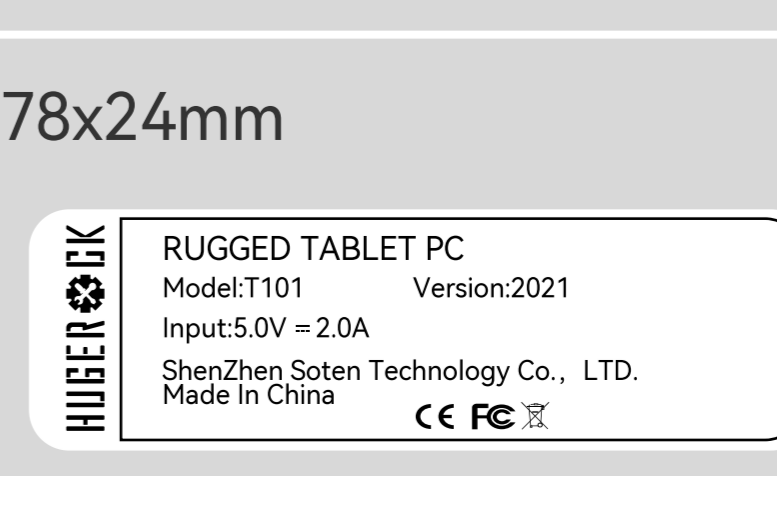


### Nameplate customization:

Program 1: C: High-gloss metallic silver  
M:Stainless iron  
(select stainless iron with charging base)  
F: Laser carving craft

Nameplate size: 78x24mm

Example:



Shenzhen SOTEN Technology Co., LTD  
ADD: 10F, B#2, Plovon Research Building, No. 5158 Shahe West Road, Nanshan, Shenzhen, China 518055  
Phone: +86(0755)-61885156 61827963 Fax: +86(0755)-61827963  
Web: www.soten.com.cn FAE: fae@soten.com.cn Skype: sales.soten